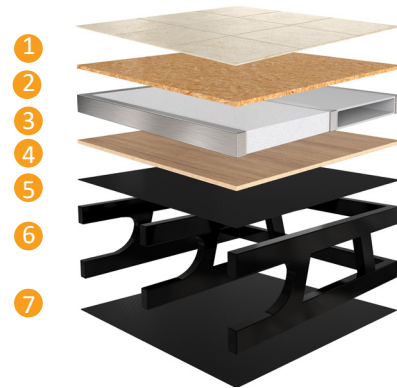




## DUTCHMEN® CONSTRUCTION ADVANTAGE

### Floor Structure

- 1 Linoleum Flooring
- 2 Composite Floor Decking
- 3 Aluminum Frame with Block Foam Insulation
- 4 Composite Floor Decking
- 5 Darco Moisture Barrier
- 6 Steel powder coated Main Frame
- 7 Fully Enclosed Underbelly

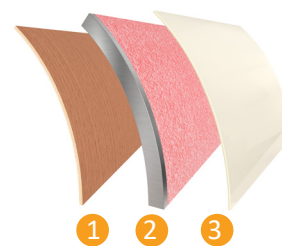


### Laminated Walls

- 1 Fiberglass Exterior Panel
- 2 Lauan Wall Backing
- 3 Aluminum Frame with Block Foam Insulation
- 4 Lauan Interior Wall Panel

### Insulated Reinforced Front Cap

- 1 Lauan Interior Panel
- 2 Aluminum Frame with Fiberglass Insulation
- 3 Fiberglass Front Cap



# MORE STANDARD FEATURES MORE VALUE

Dutchmen RVs turn more heads on the lot and in the campground than any other. Why? While other manufacturers offer features as options, Dutchmen tends to make those same features standard. Call it “bang for the buck,” “more for your money,” or simply “more value.” We’ve built a reputation for bringing RV owners more standard features for less money for more than 25 years . . . and it’s a reputation we plan to keep.



### 100% PRE-DELIVERY INSPECTION

At Dutchmen, quality is standard. Every single Dutchmen RV that comes off the line receives it’s own pre-delivery inspection. Every unit undergoes a thorough 253-point check to ensure accurate measurements, fully-functional electronics and components.



### THE INDUSTRY'S BEST RV WARRANTY

With this industry-best warranty, we take the guessing game out of what is and isn’t covered. So, that means you don’t have to wrangle over the details, because we deliver value by clearly outlining the major components we back during the first three years.



### THE LEADER IN PARTS AND SERVICE

Replacement parts. Routine checkups. Expert advice. You name it and we’ve got it covered. When only the best RV services will suffice, our industry-leading parts and service department is ready to help you get back on the road - and stay there longer than ever before.



# ATLAS

PO BOX 2000 | 2164 CARAGANA COURT | GOSHEN, IN 46527 | SALES 574.537.0600

www.dutchmen.com

Visit us online to see all the Dutchmen brands, innovative models and spacious floor plans.



\*Length is defined as the distance from the centerline of hitch pin/coupler to rear bumper of trailer. \*\*Our weights represent how most units are built, inclusive of many commonly-ordered options. \*\*\*Fresh water capacity includes water heater capacity.

DISCLAIMER: Product information is as accurate as possible as of the date of brochure publication. All features, floor plans and specifications in this brochure are subject to change without notice. Please consult Dutchmen’s website at www.Dutchmen.com for current product information and specifications. Tow Vehicle Disclaimer. CAUTION: Owners of Dutchmen recreational vehicles are solely responsible for the selection and proper use of tow vehicles. All customers should consult with a motor vehicle manufacturer or their dealer concerning the purchase and use of suitable tow vehicles for Dutchmen products. Dutchmen disclaims any liability or damages suffered as a result of the selection, operation, use or misuse of a tow vehicle. DUTCHMEN’S LIMITED WARRANTY DOES NOT COVER DAMAGE TO THE RECREATIONAL VEHICLE OR THE TOW VEHICLE AS A RESULT OF THE SELECTION, OPERATION, USE OR MISUSE OF THE TOW VEHICLE. REFERENCE DUTCHMEN MANUFACTURING OWNERS MANUAL FOR LIMITED WARRANTY DETAILS. © 2020 Dutchmen 12/9/2019-ATLAS-Printed in U.S.A.

Fifth Wheels & Travel Trailers



# ATLAS

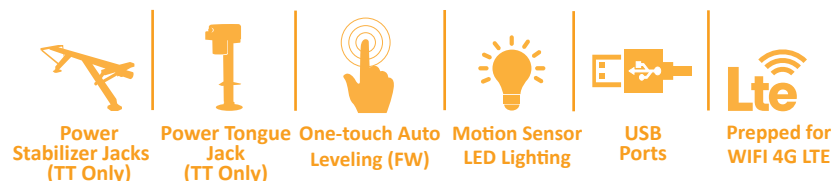
## DESTINATION AWAITS

While you search the country for new and exciting adventures, why not bring a piece of your own world along with you? With the amount of features you'll find in Atlas, you'll have everything you need to explore the open road that awaits.

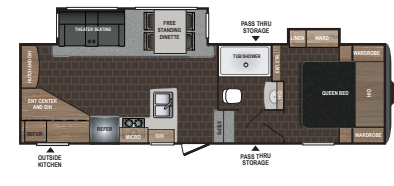
- **Fold Down Entry Steps** - stability you need when coming and going from your Atlas. Easy to expand and store away, these durable aluminum steps deliver a sound platform.
- **Arctic Insulation Package** - While other RVers are putting their rigs away for the winter, Atlas owners will still be traveling strong all winter long thanks to the Arctic Insulation Package. This package adds extra insulation from the elements, which means you'll have peace of mind up North and up the mountains.
- **Fully Enclosed and Heated Underbelly** - all of your RV's vital functions are kept out of the elements. Plus, this extra layer of protection means you can travel further into the year.
- **50 Amp Service Standard**



### Standard Features In Every Floor Plan



### Atlas Fifth Wheel



**ATLAS 2502REF**

Length: 30'0" Weight: 7,777 lbs. Sleeps: 2  
Hitch: 1,611 lbs. Height: 12'5"



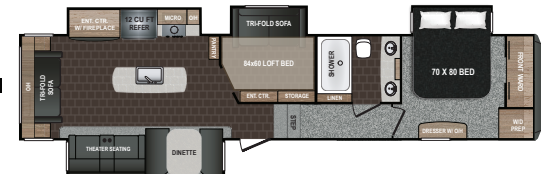
**ATLAS 2992RLF**

Length: 33' 11" Weight: 9,200 lbs. Sleeps: 2-4  
Hitch: 1,594 lbs. Height: 12'10"



**ATLAS 3172RLKB**

Length: 35'11" Weight: 9,957 lbs. Sleeps: 3-4  
Hitch: 1,773 lbs. Height: 12'2"



**ATLAS 3552MBKB**

Length: 39' 11" Weight: 11,312 lbs. Sleeps: 4-6  
Hitch: 1,916 lbs. Height: 12'6"

### EXTERIOR

15,000 BTU A/C  
6 Gal. Gas/Electric Water Heater  
Outside TV Hook up & Mount  
Outside Speakers  
50 Amp Detachable Marine Power Cord  
Solar Prep  
Backup Camera Prep  
Spare Tire  
Level Up Auto-Leveling (Fifth Wheels Only)  
Exterior Spray Port

### INTERIOR

Large Drawers Under Dinette Booth  
Oversized Farm-Style Single Bowl Sink  
High Rise Pull-Out Faucet  
3 Burner Range w/Glass Cover  
LED HD TV  
8 cu. ft. Refrigerator  
Seamless Countertops  
LED Interior Lighting  
Fireplace  
Porcelain Toilet  
Medicine Cabinet  
Reading Lights in Bedroom

### Atlas Travel Trailer



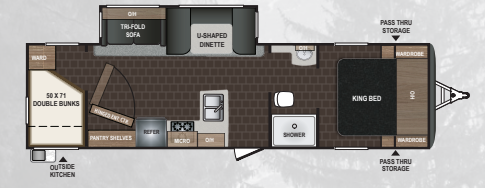
**ATLAS 2732RB**

Length: 31' 1" Weight: 6,398 lbs. Sleeps: 2-4  
Hitch: 759 lbs. Height: 11'5"



**ATLAS 3202BH**

Length: 36' 10" Weight: 7,980 lbs. Sleeps: 4-8  
Hitch: 1,020 lbs. Height: 11'2"



**ATLAS 2902BH**

Length: 36' 11" Weight: 7,404 lbs. Sleeps: 4-6  
Hitch: 1,020 lbs. Height: 11'2"



**ATLAS 3302RL**

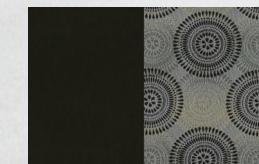
Length: 37' 5" Weight: 8,848 lbs. Sleeps: 2-4  
Hitch: 1,184 lbs. Height: 11'7"



**ATLAS 3382BH**

Length: 37' 6" Weight: 8,179 lbs. Sleeps: 4-6  
Hitch: 1,134 lbs. Height: 11'7"

### INTERIOR DECOR



Belmont

\*All information & specifications are for units manufactured after 09/15/2019

To learn more visit our website [dutchmen.com](http://dutchmen.com)