

## 10 CU FT. GAS/ELECTRIC REFRIGERATOR



## CONVERTIBLE U-SHAPED DINETTE

Convert the U-shaped dinette into a Straight dinette for more elbow room.



## SOLID-STEP

Safe & Secure Footing



# ASPEN TRAIL

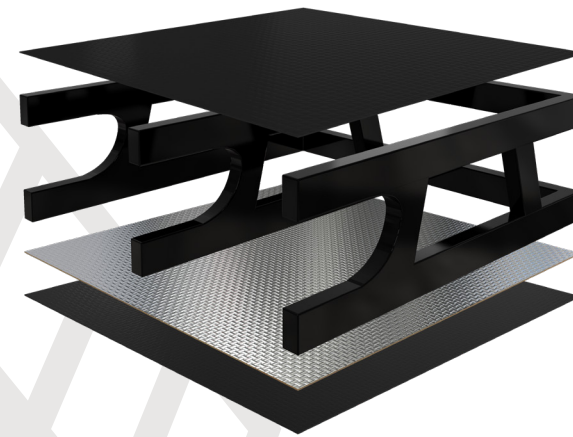


## MORE STANDARD FEATURES MORE VALUE

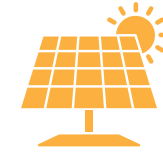
### Floor Structure

- 1 Darco Moisture Barrier
- 2 Steel Powder Coated Main Frame
- 3 Fully Enclosed Underbelly

- 1
- 2
- 3



## TECHNOLOGY PACKAGE



Solar Prep



Bluetooth Capable Stereo



Backup Camera Prep

When going off grid doesn't mean giving up comfort.


## RESIDENTAL QUEEN BED


Durable and easy to care.





## JACK KNIFE SOFA WITH RECLINERS





  
**Lte**  
 Prepped for WIFI 4G LTE


  
**Power Tongue Jack**

  
**Power Stabilizer Jacks**

  
**Residential Queen Bed**

  
**52 Gallons of Fresh Water**

  
**Duel 20lb Propane Tanks**

  
**PET FRIENDLY WELCOME**

## TOP VALUE FEATURES



**Dutchmen**<sup>®</sup>

Legendary Innovation. Trailblazing Value.

Visit us online to see all the Dutchmen brands, innovative models and spacious floorplans.  
dutchmen.com



**VALUE \$XXX**