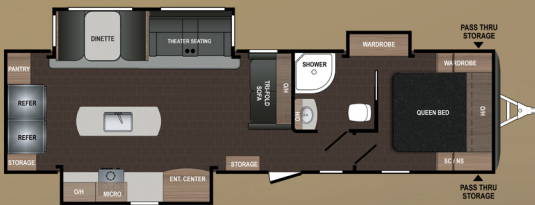


ATLAS

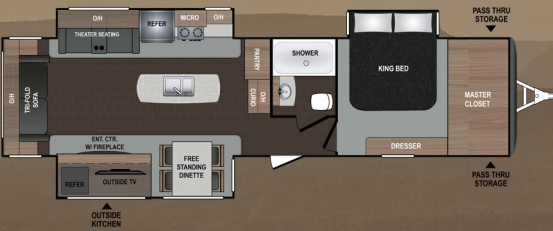
TRAVEL TRAILERS



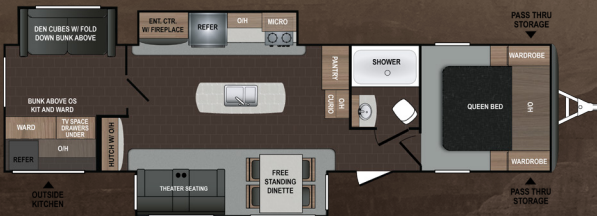
ATLAS | 2922BH | Ext. Length: 31' 0" Ext. Height: 12' 2"
Average Shipping Weight: 6,949 Sleeps: 10



ATLAS | 3132ML | Ext. Length: 35' 11" Ext. Height: 11' 7"
Average Shipping Weight: 7,968 Sleeps: 6

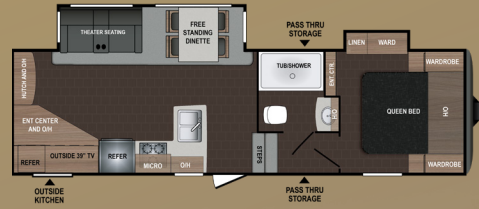


ATLAS | 3302 | Ext. Length: 37' 10" Ext. Height: 11' 7"
Average Shipping Weight: 9,024 Sleeps: 10



ATLAS | 3382BH | Ext. Length: 37' 4" Ext. Height: 11' 7"
Average Shipping Weight: 8,840 Sleeps: 10

FIFTH WHEELS



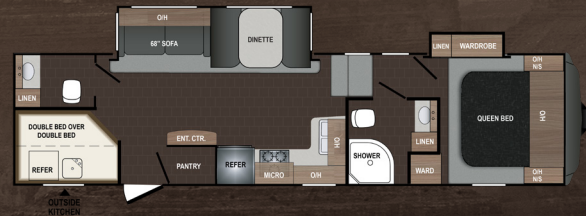
ATLAS | 2502REF | Ext. Length: TBD Ext. Height: TBD
Average Shipping Weight: TBD Sleeps: 6



ATLAS | 2952RLF | Ext. Length: 34' 6" Ext. Height: 12' 5"
Average Shipping Weight: 8,954 Sleeps: 6



ATLAS | 3002RLF | Ext. Length: TBD Ext. Height: TBD
Average Shipping Weight: TBD Sleeps: 6



ATLAS | 3112BHF | Ext. Length: 36' 6" Ext. Height: 12' 5"
Average Shipping Weight: 9,052 Sleeps: 10



ATLAS | 3252MBF | Ext. Length: 36' 6" Ext. Height: 12' 10"
Average Shipping Weight: 9,934 Sleeps: 12

ATLAS

TOP FEATURES

- Solid Step In Door Entry Steps (aluminum steps on all secondary entrances)
- Painted Fiberglass Front Cap
- Roof Ladder and Spare Tire Standard
- Automatic Leveling System (Fifth Wheels only)
- Pop Up “Hidden Power Plug in Station” in all kitchen counter tops
- Lighted Backsplash
- Master Chef Kitchen with stainless steel refrigerator, microwave, oven with glass top, sink, and pull down spray faucet
- Residential size 60” x 80” Queen Beds
- King Bed in 3302RL
- Large TV with Sound Bar Entertainment System
- Super View Extra Large Living Area Windows
- 30” Wide Fire place
- Tri-Fold Sofa in All Floorplans
- Solid Surface Countertops
- Toe Kick Lighting In Kitchen
- Fantastic Fan in Kitchen Area
- Outside kitchen with TV (where applicable)
- 6’10” interior height throughout on travel trailers with 6’ Slide out height
- Solar and Back Up camera Prep



by **Dutchmen**®

Legendary Innovation. Trailblazing Value.

www.Dutchmen.com